

WOMEN IN BLUE



CONTACT

DIRECTOR: Deirdre Fishel - deirdrefishel@gmail.com

PRODUCER: Beth Levison - bethlevison@me.com

COMPANY: Blue Pictures, 25 East 21st Street, New York, NY, 10010

WEBSITE: <http://womeninbluedoc.com/>





LOGLINE

A high-profile shooting rocks Minneapolis, forcing its first female police chief to resign. Following four policewomen, working to restore trust, **WOMEN IN BLUE** explores gender, race and violence in American policing.

SYNOPSIS

Women in Blue highlights women from different ranks in the Minneapolis Police Department as they fight to redefine what it means to protect and serve. The film opens in 2017, as Chief Janée Harteau, the city's first female police chief, works to remake the MPD in the wake of an officer-involved shooting—of an unarmed black man —by trying to dismiss bad cops, retrain others and increase diversity. As part of this, she works to recruit women and promote them into every level of leadership.

Officer Alice White grew up in an African-American neighborhood with a “f*ck the police” attitude, and now leads procedural justice trainings—teaching cops fairness and respect; still, she is torn between being “black and blue.” Commander Melissa Chiodo, one of the first women to head Special Crimes—that handles sex crimes—does things differently, charging those buying, not selling sex. Rookie Erin Grabosky navigates night patrol—going from bar fights to suicide attempts—trying to show that some cops care.

When another officer-involved shooting occurs—this time of an unarmed white woman by a black officer—Minneapolis erupts and Chief Harteau is forced to resign. The new African-American chief appoints only men to his top brass. Amidst reports of racial bias and police brutality, these women struggle to do their jobs and continue the fight for gender equity. Their trajectories provide an arresting look at gender, race and violence in American policing, and at women cops committed to reimagining their male-dominated profession.



THE TEAM

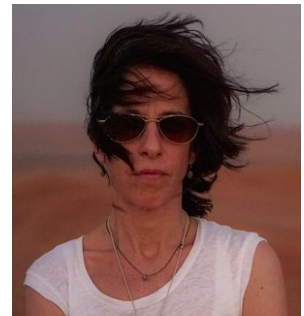
Deirdre Fishel, Director & Producer

Fishel is a producer/director of documentaries and dramas that have premiered in competition at Sundance, SXSW, AFI and Full Frame and been broadcast in 35 countries worldwide. Her most recent documentary *Care*, which looks at the poignant but hidden world of home elder care, was funded by ITVS, the Ford and MacArthur Foundations and broadcast on *America Reframed*. Fishel is the Director of the BFA in Film/Video at the City College of New York.



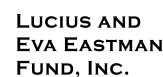
Beth Levison, Producer

Levison is an Emmy and Peabody-winning producer/director based in NYC. Her most recent film *Made in Boise* (dir. Beth Aala) about four women who carry babies for strangers in Boise, Idaho premiered at AFI DOCS and will be the season opener of *Independent Lens*' 2019/2020 season. Previous projects include the Emmy-nominated *Personal Statement* which was broadcast on PBS (2018), *32 Pills: My Sister's Suicide* (dir. Hope Litoff) which was broadcast on HBO in 2017, and her independent directorial/producing debut *Lemon*.



Abigail Disney & Gini Reticker, Executive Producers for Fork Films

Disney and Reticker are the Academy Award-nominated and Emmy Award-winning team behind Fork Films. They have directed and produced *Armor of Light*; *Pray the Devil Back to Hell*; *Women, War & Peace*; and *The Trials of Spring*; and have supported and served as executive producers on numerous documentaries including the Academy Award-nominated *Strong Island*; *Cameraperson*; *Trapped*, *1971*, *Hot Girls Wanted*, *The Square* (also Academy Award-nominated), *Sun Come Up* and *The Invisible War*.



THE TEAM (continued)

Tom Bergmann, Director of Photography

Bergmann is a Director of Photography for documentaries, narrative and experimental films. His recent works include the Academy Award-nominated documentaries *Abacus*, directed by Steve James, *Life, Animated* directed by Roger Ross Williams, and the feature-length documentary *Promised Land* directed by Eugene Jarecki (2017 Cannes Film Festival premiere). Bergmann has been a freelance Director of Photography for 15 years.

Sunita Prasad, Editor

Prasad's editing work has screened theatrically and in major festivals internationally including LA Film Fest, DOC NYC, Hot Docs, and Human Rights Watch Film Festival, in addition to being showcased on PBS, Vice, and Logo. Prasad's past editing credits include critically acclaimed feature documentaries *93Queen*, *Out in the Night*, and *Makers: Once And For All*, as well as TV documentaries such as the Emmy-nominated *And Still I Rise: Black America since MLK* and the forthcoming *Korea: The Neverending War*.

Christopher White, Co-Editor

White has been a documentary film editor, producer and director of numerous award-winning films since 1995. *Born To Be*, his most recent project, premiered at the 2019 New York Film Festival. In 2018, *Roll Red Roll* premiered at the Tribeca Film Festival, was the season opener for the 2018 season of POV on PBS, and is currently running on Netflix. Other films include; *Love Free or Die* (Sundance 2012 Special Jury Prize), *The Killer Within* (2006 Toronto Film Festival; 2008 Best Documentary Emmy Nomination), and *Family Name* (Sundance 1997). Forthcoming is *The Innocence Files*, a multi-part Netflix series on wrongful incarceration, directed by Roger Ross Williams.

Chad Cannon, Composer

Cannon's score to the Academy Award-winning documentary *American Factory* was nominated for a Cinema Eye Honors award for Outstanding Original Score. His debut soundtracks also received global recognition: in 2017, the Hiroshima documentary *Paper Lanterns* received two IFMCA nominations, while *Cairo Declaration*, co-composed with Xiaogang Ye, received China's highest film prize, the Golden Rooster Award for Best Music. He is a graduate of Harvard & Juilliard and an alumnus of the Sundance Composer Labs.



GENRE	Documentary
LENGTH	82 minutes
FORMAT	4k, Color
LANGUAGES	English
PRODUCTION	WOMEN IN BLUE is a Fork Films Production in association with Mind's Eye Productions and InMaat Productions and a co-production of Independent Television Service (ITVS) with funding provided by the corporation for public broadcasting (CPB).
SHOOTING LOCATIONS	Minneapolis, Minnesota, USA
DIRECTOR	Deirdre Fishel
PRODUCED BY	Beth Levison
PRODUCERS	Deirdre Fishel, Aideen Kane
EXECUTIVE PRODUCERS	Abigail E. Disney, Sally Jo Fifer, Gini Reticker, Lois Vossen
ORIGINAL SCORE	Chad Cannon
DIRECTOR OF PHOTOGRAPHY	Tom Bergmann
EDITOR	Sunita Prasad
CO-EDITOR	Christopher White
FUNDING/SUPPORT	Fork Films, IDA Enterprise Documentary Fund, TFI Network and the Gucci Tribeca Documentary Fund, The Made in NY Women's Film, TV & Theatre Fund by the City of New York Mayor's Office of Media and Entertainment in association with The New York Foundation for the Arts, Mary D. Fisher, Ruth Ann Harnisch, Bill and Michelle Pohlad, Lucius and Eva Eastman Fund, and IFP Spotlight on Documentaries.
DISTRIBUTION/RIGHTS	The film will broadcast as part of Independent Lens' 2020/2021 season. All rights, except for U.S. public television are available.
KEY CAST	Alice White, Melissa Chiodo, Janée Harteau, Erin Grabosky, Catherine Johnson, Nekima Levy-Pounds, Medaria Arradondo

